

**DESCRIPTION:**

Civil engineers plan, design, construct and oversee public and private infrastructure systems as well as maintain essential structures such as bridges, buildings, tunnels, roads and water supply and sewage systems.

**TYPES OF JOBS:**

- Consulting Firms (municipal services, transportation, environmental, hazardous waste mitigation, site development)
- Government Agencies (state departments of transportation, city planners, municipal engineers)
- Industry (structural engineers, construction, project managers/analysts)

**COMPANIES WHO HIRE:**

- |                                |                        |
|--------------------------------|------------------------|
| • Black & Veatch               | • Butler Manufacturing |
| • Burns & McDonnell            | • Enercon              |
| • U.S. Army Corps of Engineers | • HNTB                 |

**EXAMPLE WORK PROJECTS**



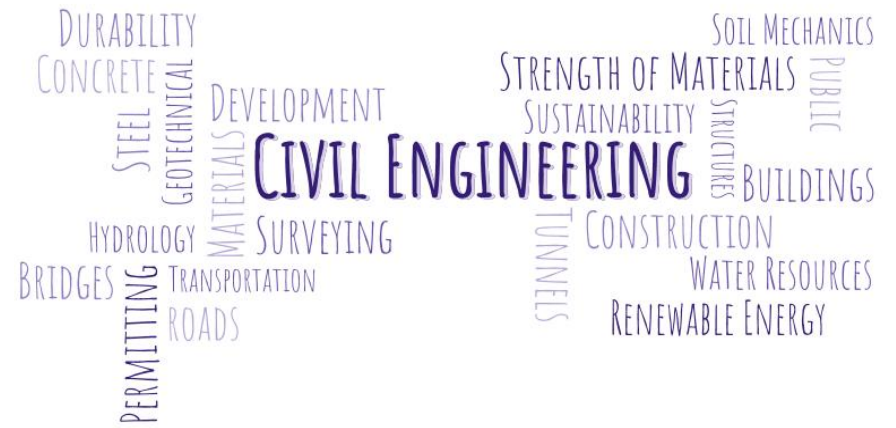
Demolition at Nall Ave & I-435



Pool & Splash pad Design



Design & Construction of KCI Airport



**DESCRIPTION:**

Civil engineers plan, design, construct and oversee public and private infrastructure systems as well as maintain essential structures such as bridges, buildings, tunnels, roads and water supply and sewage systems.

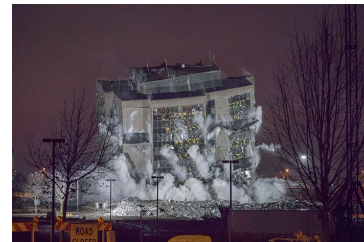
**TYPES OF JOBS:**

- Consulting Firms (municipal services, transportation, environmental, hazardous waste mitigation, site development)
- Government Agencies (state departments of transportation, city planners, municipal engineers)
- Industry (structural engineers, construction, project managers/analysts)

**COMPANIES WHO HIRE:**

- |                                |                        |
|--------------------------------|------------------------|
| • Black & Veatch               | • Butler Manufacturing |
| • Burns & McDonnell            | • Enercon              |
| • U.S. Army Corps of Engineers | • HNTB                 |

**EXAMPLE WORK PROJECTS**



Demolition at Nall Ave & I-435



Pool & Splash pad Design



Design & Construction of KCI Airport

## WHAT SHOULD I DO IN HIGH SCHOOL TO PREPARE MYSELF FOR CIVIL ENGINEERING DEGREE?

- Join Project Lead the Way
- Attend IGED
- Take practice ACT / SAT
- Drafting / CAD
- Math / Science Classes

## REGIONAL SCHOOLS WHO HAVE THIS MAJOR:

- University of Missouri Kansas City
- University of Kansas
- Kansas State University
- Missouri Science and Technology
- Iowa State
- Oklahoma State
- The University of Oklahoma

## STUDENT INVOLVEMENT:

- Concrete Canoe
- Steel Bridge

## SCHOLARSHIPS:

- American Society of Civil Engineers (ASCE)
- Kansas Society of Professional Engineers (KSPE)
- National Society of Professional Engineers (NSPE)
- American Public Works Association (APWA)

## COURSE LOAD:

University Requirements: 21 hrs

Engineering Requirements: 17 hrs

Math Requirements: 16 hrs

Science Requirements: 17 hrs

Civil Engineering Core Classes: 36 hrs

Civil Engineering Electives: 18 hrs

Total: 126 hrs

## SALARY RANGE:

Bachelor's degree candidates

National average starting salary range: \$55,000 - \$65,000

## WHAT SHOULD I DO IN HIGH SCHOOL TO PREPARE MYSELF FOR CIVIL ENGINEERING DEGREE?

- Join Project Lead the Way
- Attend IGED
- Take practice ACT / SAT
- Drafting / CAD
- Math / Science Classes

## REGIONAL SCHOOLS WHO HAVE THIS MAJOR:

- University of Missouri Kansas City
- University of Kansas
- Kansas State University
- Missouri Science and Technology
- Iowa State
- Oklahoma State
- The University of Oklahoma

## STUDENT INVOLVEMENT:

- Concrete Canoe
- Steel Bridge

## SCHOLARSHIPS:

- American Society of Civil Engineers (ASCE)
- Kansas Society of Professional Engineers (KSPE)
- National Society of Professional Engineers (NSPE)
- American Public Works Association (APWA)

## COURSE LOAD:

University Requirements: 21 hrs

Engineering Requirements: 17 hrs

Math Requirements: 16 hrs

Science Requirements: 17 hrs

Civil Engineering Core Classes: 36 hrs

Civil Engineering Electives: 18 hrs

Total: 126 hrs

## SALARY RANGE:

Bachelor's degree candidates

National average starting salary range: \$55,000 - \$65,000