

DESCRIPTION:

Construction Engineering combines design (civil) with construction management (contract management, construction methods, cost and schedule control, people management and project estimating).

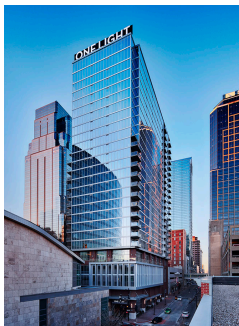
Where do they work?

- Design Firms
- Construction Companies
- Specialty Subcontractors
- Material Suppliers

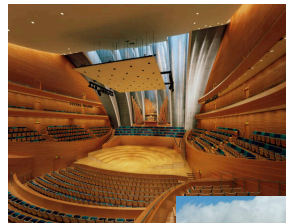
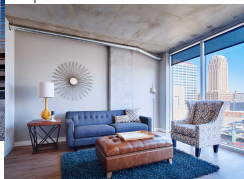
COMPANIES WHO HIRE IN KANSAS CITY:

- JE Dunn Construction
- HDR
- McCown Gordan Construction
- Kiewit
- Turner Construction
- Black & Veatch
- Burns & McDonnell

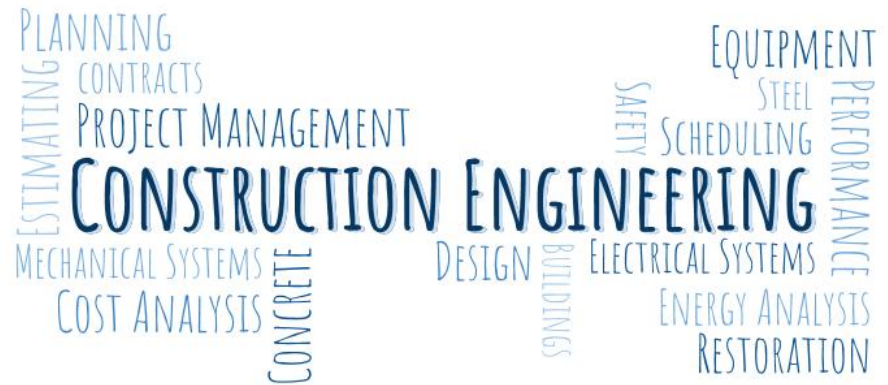
EXAMPLE WORK PROJECTS



One Light Tower. JE Dunn constructed the 25-story luxury apartments.



Kauffman Center for Performing Arts



DESCRIPTION:

Construction Engineering combines design (civil) with construction management (contract management, construction methods, cost and schedule control, people management and project estimating).

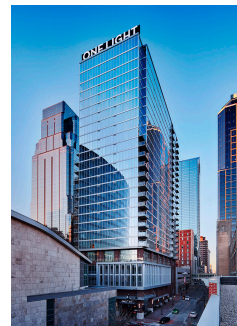
Where do they work?

- Design Firms
- Construction Companies
- Specialty Subcontractors
- Material Suppliers

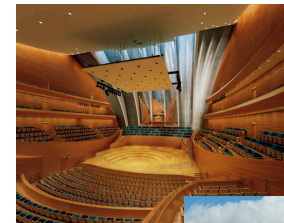
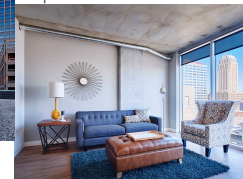
COMPANIES WHO HIRE IN KANSAS CITY:

- JE Dunn Construction
- HDR
- McCown Gordan Construction
- Kiewit
- Turner Construction
- Black & Veatch
- Burns & McDonnell

EXAMPLE WORK PROJECTS



One Light Tower. JE Dunn constructed the 25-story luxury apartments.



Kauffman Center for Performing Arts



WHAT SHOULD I DO IN HIGH SCHOOL TO PREPARE MYSELF FOR CIVIL ENGINEERING DEGREE?

- Join Project Lead the Way
- Attend IGED
- Take practice ACT / SAT
- Camp NAWIC

REGIONAL SCHOOLS WHO HAVE THIS MAJOR:

Iowa State - *Construction Engineering*

Pittsburg - *Construction Engineering Technology*

University of Kansas, Kansas State, Pittsburg, University of Central Missouri - *Construction Management*

Oklahoma State - *Construction Management Technology*

STUDENT INVOLVEMENT/SCHOLARSHIPS:

- National Society of Professional Engineers (NSPE)
- Society of Women Engineers (SWE)
- National Association of Women in Construction (NAWIC) - <http://www.kcnawic.org/scholarships.html>
- Kansas City Builder's Association - <https://www.buildersassociation.com/WCM/Education/Scholarships.aspx>

COURSE LOAD:

University Requirements: 21 hrs

Engineering Requirements: 24 hrs

Math Requirements: 17 hrs

Science Requirements: 14 hrs

Construction Engineering Core Classes: 30 hrs

Civil Engineering Electives: 18 hrs

Total: 125 hrs

SALARY RANGE:

Bachelor's degree candidates

National average starting salary range: \$50,000 - \$60,000

WHAT SHOULD I DO IN HIGH SCHOOL TO PREPARE MYSELF FOR CIVIL ENGINEERING DEGREE?

- Join Project Lead the Way
- Attend IGED
- Take practice ACT / SAT
- Camp NAWIC

REGIONAL SCHOOLS WHO HAVE THIS MAJOR:

Iowa State - *Construction Engineering*

Pittsburg - *Construction Engineering Technology*

University of Kansas, Kansas State, Pittsburg, University of Central Missouri - *Construction Management*

Oklahoma State - *Construction Management Technology*

STUDENT INVOLVEMENT/SCHOLARSHIPS:

- National Society of Professional Engineers (NSPE)
- Society of Women Engineers (SWE)
- National Association of Women in Construction (NAWIC) - <http://www.kcnawic.org/scholarships.html>
- Kansas City Builder's Association - <https://www.buildersassociation.com/WCM/Education/Scholarships.aspx>

COURSE LOAD:

University Requirements: 21 hrs

Engineering Requirements: 24 hrs

Math Requirements: 17 hrs

Science Requirements: 14 hrs

Construction Engineering Core Classes: 30 hrs

Civil Engineering Electives: 18 hrs

Total: 125 hrs

SALARY RANGE:

Bachelor's degree candidates

National average starting salary range: \$50,000 - \$60,000