



SWE-KC NEWSLETTER

Kansas City Section of the Society of Women Engineers, P.O. Box 860363, Shawnee, KS 66286
Email: swe.kc.mail@gmail.com Website: swe-kc.org

SWE-KC President's Message

I am very excited about this year with SWE and the Kansas City Section in particular. The FY12 Executive Council (EC) did an outstanding job increasing membership, hosting a diverse event schedule and participating in a wide variety of outreach programs. Luckily, we have several returning members this year to the EC, Vice President, Amanda Wages (the creative genius behind the Meet & Greet program) and Treasurer, Shelley Wolff (our very own distinguished SWE Fellow). Our new additions, Sunita Gupta, Secretary, and Jenna Walsh Harpole, Section Representative, have added some novel ideas and perspectives. I would like to thank all EC members both old and new for their hard work and long hours.

The EC recently met to discuss our goals and develop tactical plans for SWE-KC in FY13. Once again our section goals for this year focus on increasing our membership and membership involvement. **Here is where we need your help!** In order to continue to offer programs, events and outreach opportunities to make 2013 a success, we need volunteers for several open committee positions. Besides this being a fun way to interact with other SWE

INSIDE THIS ISSUE

SWE-KC President's Message	1
Save the Date! Fellows Reception	1
SWE-KC FY13 Officers	
and Call for Open Committee Positions	2
Introduce a Girl to Engineering Day 2012	3
Meet and Greet on the Move	4
Event and Communication Preferences Survey	4
SWE National Conference 2013	5

members, the experience may also help you grow your management, organization or financial skills. In addition, we write excellent professional recommendations. I urge you to get involved this year with our SWE-KC section.

Last, I invite all of you to join us at the Fellows' Reception on October 3rd. This is an excellent opportunity to network with all levels of our SWE-KC Section from intern to entrepreneur, college student to executive and everything in between.

I look forward to seeing you at the Fellows' Reception!

Stephanie DeCaro
SWE-KC President



2012 Annual Fellows Reception

Wednesday, October 3, 2012, 5:30 - 7:30 PM
@ Unity Temple on the Plaza – Gallery Hall
(807 West 47th Street, Kansas City, MO 64112)

RSVP required by September 26th to swolff@hntb.com

The reception will also serve as our fall membership drive, so please invite at least one prospective member to join you at the event. The evening's program will include introduction of SWE-KC Officers and Fellows, information on SWE's goals, and upcoming activities. There is no charge for this event.

New this year: We will have a raffle for a 50% discount off a SWE membership. Everyone who's current on dues by September 30th will receive 1 entry into the raffle. You can receive additional entries for referring a friend (the new member must name the referral via email to swe.kc.mail@gmail.com), and 1 entry for attending the Fellows' Reception. (Board members and life members are excluded.)

Hosted by SWE-KC Section Fellows: **Lynn Bertuglia**, *Managing Director, Black & Veatch*, **Jane Knoche**, *General Engineer, FAA*, **Cheri Leigh**, *Principal, Leigh & O'Kane Structural Engineers*, **Deb O'Bannon, Ph.D.**, *Associate Professor, UMKC*, **Shelley Wolff**, *VP, HNTB*

SWE-KC Officers

President

Stephanie DeCaro
stephanie.decaro@yahoo.com

Past President

Susan Enneking
susanenneking@sbcglobal.net

Vice President

Amanda Wages
amandawages@gmail.com

Secretary

Sunita Gupta
sunita.sgupta@gmail.com

Treasurer

Shelly Wolff
swolff@hntb.com

Section Representative

Jenna Walsh Harpole
WalshJennaG@JohnDeere.com

JEC Representative

Karen Gilbertson
karen.gilbertson@dot.gov

Outreach Chair

Kristin Ehlers
kristin.ehlers@swe.org

Open Positions

- **Events Chair**
- **Newsletter Editor**
- **Membership Chair**
- **Awards Chair**

ANNOUNCEMENTS

SWE-KC Elects New FY13 Officers!

The FY13 (July 2012 – June 2013) elections were conducted in the Spring. The Officers' bios are available on the website <http://www.kcswe.org/> under the "SWE-KC Officers" tab. We'd like to welcome the new officers this year: Jenna Walsh Harpole and Sunita Gupta.

SWE-KC Executive Council Meeting Schedule

Executive council meetings will be held the third Tuesday of each month, excluding December, from 7:30–8:30pm at Panera (15108 W 119th St, Olathe KS 66062 – between I-35 and BlackBob, N side of 119th). All members are welcome to attend.

SWE-KC Organizational Structure

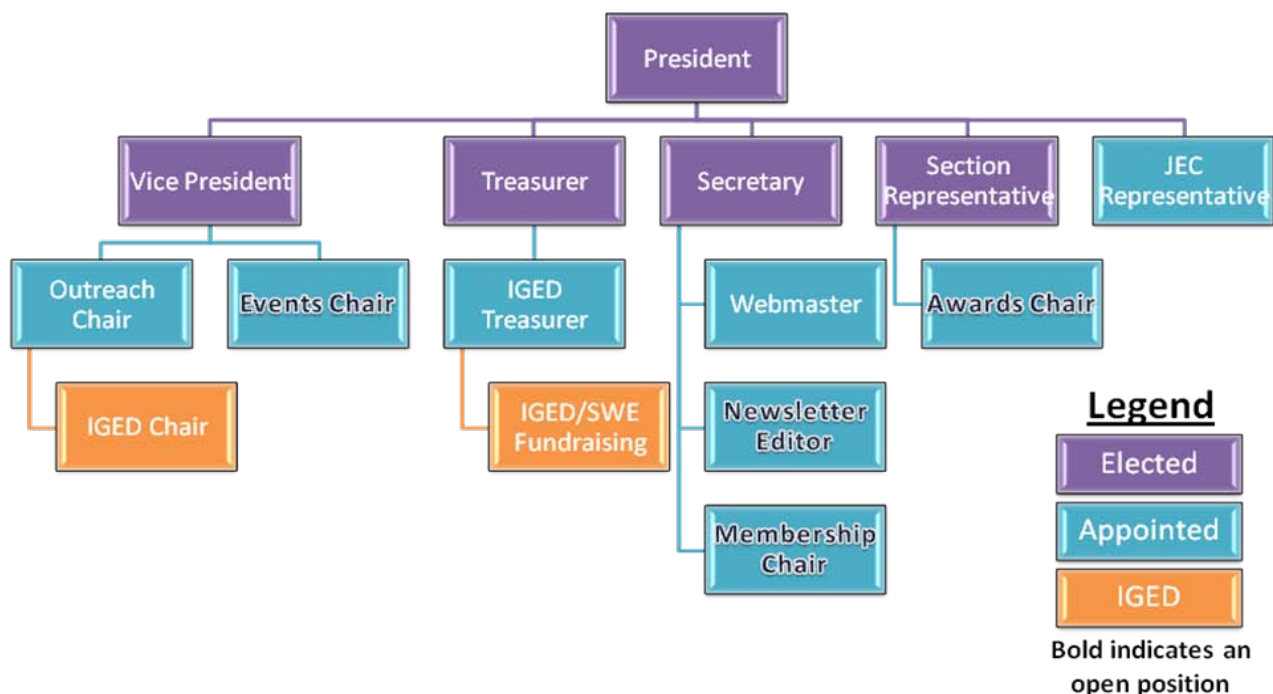
New this year, we've created an organizational structure for reporting. We have openings for a few positions:

- **Events Chair**
- **Newsletter Editor**
- **Membership Chair**
- **Awards Chair**

The time commitment for being a chair is flexible. The responsibilities include

1. Holding regular meetings, in person or via teleconference, with your committee.
2. Reporting to their officers monthly in time for Executive Council meetings.
3. Attending Executive Council meetings twice a year.
4. Writing an annual report summarizing what your committee has done and suggestions for the future.

If you would like to get involved, please email swe.kc.mail@gmail.com with your name and which positions you are interested in.



Introduce a Girl to Engineering Day (IGED)

by Kristin Ehlers

As women engineers it's always encouraging to help lead the path for the next generation of young talented females – which is just what the Kansas City Section did February 17, 2012, with the second annual Introduce a Girl to Engineering Day (IGED) for the Kansas City Metro Area. IGED is targeted toward high school students ranging from those with no knowledge about engineering to those already planning to study engineering in college. It was a full-day event held at the UMKC campus with high school students, teachers and counselors, professional mentors and volunteers, corporate and university representatives, and college students all in attendance.

One benefit of the program is the pairing of the high school students with a professional mentor who studied or is working in the engineering field in which the student is interested. Students had the opportunity to interact one-on-one with their mentors and use them as a resource as they learned more about engineering throughout the day. One mentor commented that “[she] found the mentor program most helpful. The students seemed comfortable getting to know you and asked lots of questions” – which fit in perfectly with the “Ask Questions!” motto for the day which encouraged the girls to take advantage of this opportunity and learn as much as they possibly could about engineering.

The high school girls participated in a wide array of activities accompanied by their professional mentors in pursuit of this knowledge. In the morning, they learned about the different engineering disciplines and what sort of jobs they could do with the different degrees. They had the opportunity to ask current engineering students anything they wanted about college, studying engineering, what classes they should take in high school, etc., with the college student panel, and they got a glimpse into what sort of things engineers do here in KC and what engineering programs universities have to offer at the industry fair. During lunch, the girls got to hear SWE Fellow Cheri Leigh talk about her life and career as an engineer, and in the afternoon, they participated in two hands-on activities. With the first activity, the students built their own mini electric organ where the distance and the movement of the two wire leads on pencil lead produced different notes and sounds. The second activity was a group design project where they had a limited time to build a structure that would hold a few heavy engineering textbooks.

Overall, it was a busy day that exposed the girls to several different aspects of engineering and STEM careers in general. Thanks to the hard work and efforts of the seven planning committee members, KC SWE was able to put on another successful IGED event as validated by survey comments such as the following student remark:

“I learned so much about engineering that I didn't know before today. I learned about things I didn't even know existed. The information was so plentiful that I couldn't have asked for more.”



Students getting ready to test the tower they built



A mentor and a student working together to create an electronic piano

Join the Committee!

We have just started planning for our 3rd Annual IGED Event, and we would love to have more people involved in our committee. As far as time commitment goes, we meet about once a month until the event draws closer. Starting in January, we usually meet biweekly, and about two weeks before the event we need a lot of help to put together all the last minute details.

If you're interested in getting involved, please email kc.iged@gmail.com.

Meet and Greet on the MOVE!



by Amanda Wages

It's the second Wednesday of the month and you've been planning on making it to the SWE-KC Meet and Greet, BUT you just made it home and don't feel like driving all the way out to the Plaza! Well, Lucky YOU! We are on the move and coming to a location near you!

This year we have listened to feedback from our membership, and we are looking for ways to get more members engaged. The way we plan to do that this coming year is to divide and conquer. We will now be serving locations throughout the Kansas City Metro Area! These will include Overland Park, Olathe, North Kansas City, Lawrence and others that are yet to be decided. Check out the calendar on the website (<http://kcswe.org>) to see where we will be each month. We will also be sending out calendar invites in our emails, so you can save it to your Outlook calendar.

At the September Meet & Greet, we had lots of volunteers! If you want to see your location represented, volunteer to be a host. We still have spots open!

This event is a great way to network with SWE-KC Members and potential members. We always welcome new faces. As a matter of fact, we've met many new faces this past year, on average at least one new person per Meet & Greet!



Date	Location	Hostess
9/12	Tomfooleries The Plaza	Amanda Wages
10/10	Johnny's Tavern Olathe	Sunita Gupta
11/14	Houlihans Zona Rosa	Dixie Younger
12/12	Nick and Jakes Overland Park	Deepthi Abbireddy



Event and Communication Preferences Survey

In an effort to serve our membership better, we'd like to know your preferences for events and communication. We've created a short survey to collect feedback.

<http://www.surveymonkey.com/s/HLX3KJZ>

Don't Forget: Early Bird Discount Ends October 12th



The banner features the WE12 logo on the left, which includes the text 'The Annual Conference for Women Engineers'. To the right, it says '3 Days of Energy. November 8-10 >> 2012' and 'A Lifetime of Opportunity.' Below this is a navigation bar with four categories: 'WE12 HIGHLIGHTS', 'ATTENDEES', 'EXHIBITORS/SPONSORS', and 'VOLUNTEERS/SPEAKERS'. The main content area is a collage of images: a woman laughing, a woman smiling, a woman with a star icon and the text 'Houston Texas', a woman with a speech bubble icon and the numbers '1 2 3 4', a woman with a drop icon, and another woman smiling. A central red box contains the text 'Register Today for WE12, November 8-10, 2012 in Houston.'

Go to we12.swe.org to register NOW!

Stay tuned for details on these events in the Winter 2012 Newsletter

Great Plains Regional Future City Competition, January 26th, 2013, KU Campus, Lawrence, KS

2013 Introduce a Girl to Engineering (IGED) Kansas City, February 2013

First Robotics Kansas and Western Missouri Regional Competition, March 2013